

Save the Children

Global Pharma Supply Chain and Logistics Forum on
19th & 20th October 2023 in Berlin



Save the Children

Save the Children

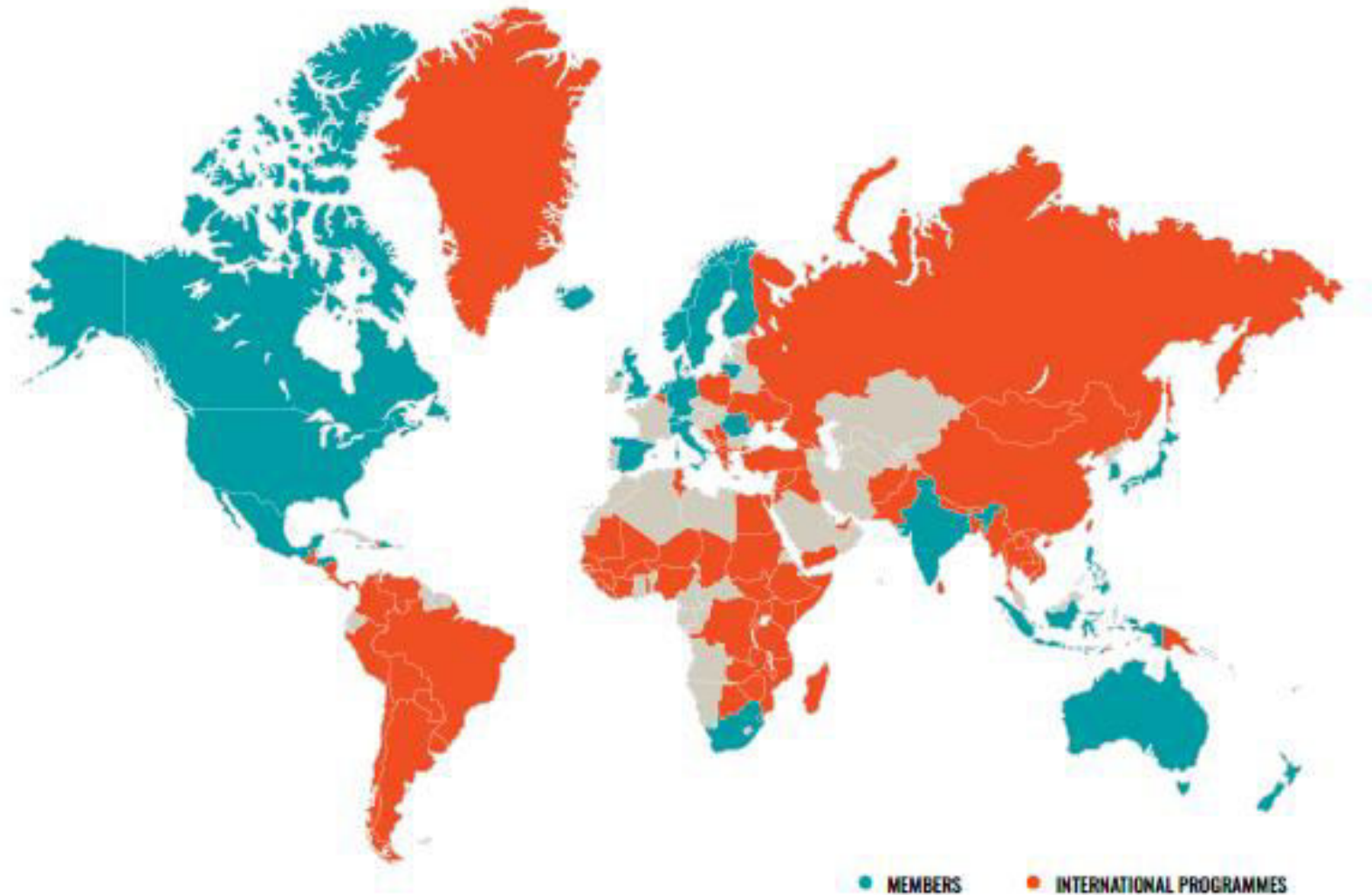
WHO WE ARE

SAVE THE CHILDREN IS THE WORLD'S FIRST AND LARGEST INDEPENDENT CHILD RIGHTS ORGANISATION.

WITH OVER 100 YEARS OF EXPERIENCE, WE CONTINUE TO ADAPT, TO DO WHAT IS RIGHT, AND TO MEET THE NEEDS OF CHILDREN IN A CHANGING WORLD.

Save the Children Association is a global movement made up of Save the Children International and 30 member organisations (including three associate members working towards full member status) around the world. All of these member organisations engage supporters and donors in their national context and deliver programmes and advocacy work to help children in their countries.

Where do we work



OUR 2022–2024 GLOBAL STRATEGY: TRANSFORMING IMPACT

A CHANGING GLOBAL CONTEXT

RESPOND TO AND ANTICIPATE THREATS FROM COVID-19,
CONFLICT AND CLIMATE CHANGE.

PROTECT THE RIGHTS OF CHILDREN MOST IMPACTED BY
INEQUALITY AND DISCRIMINATION, NOW AND FOR THE FUTURE.

4 STRATEGIC GOALS OUR IMPACT FOR AND WITH CHILDREN



HEALTHY
START IN LIFE



SAFE BACK
TO SCHOOL
& LEARNING



LIVE FREE
FROM VIOLENCE



SAFETY NETS &
RESILIENT FAMILIES

6 ENABLERS HOW WE ACCELERATE THAT IMPACT



ADVOCATE,
CAMPAIGN
& MOBILISE



DIGITAL
& DATA



STRATEGIC
PARTNERSHIPS



SHIFT POWER



AGILE &
INCLUSIVE
ORGANISATION



GROW &
OPTIMISE
RESOURCES



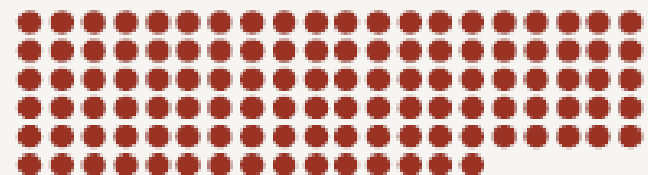
OUR GLOBAL SNAPSHOT 2022

118M 
**CHILDREN REACHED
DIRECTLY & INDIRECTLY**

 **\$2.7B**
TOTAL INCOME

26,458 
STAFF

 **WORKED IN 115
COUNTRIES**



2022

129 POLICY
CHANGES 

4.5M 
CHILDREN REACHED
LIVING IN POVERTY



33M

CHILDREN REACHED
THROUGH **HEALTH**
AND NUTRITION
PROGRAMMING



9.2M

CHILDREN REACHED
THROUGH **EDUCATION**
PROGRAMMING



3.8M

CHILDREN REACHED
THROUGH **CHILD**
PROTECTION
PROGRAMMING



107

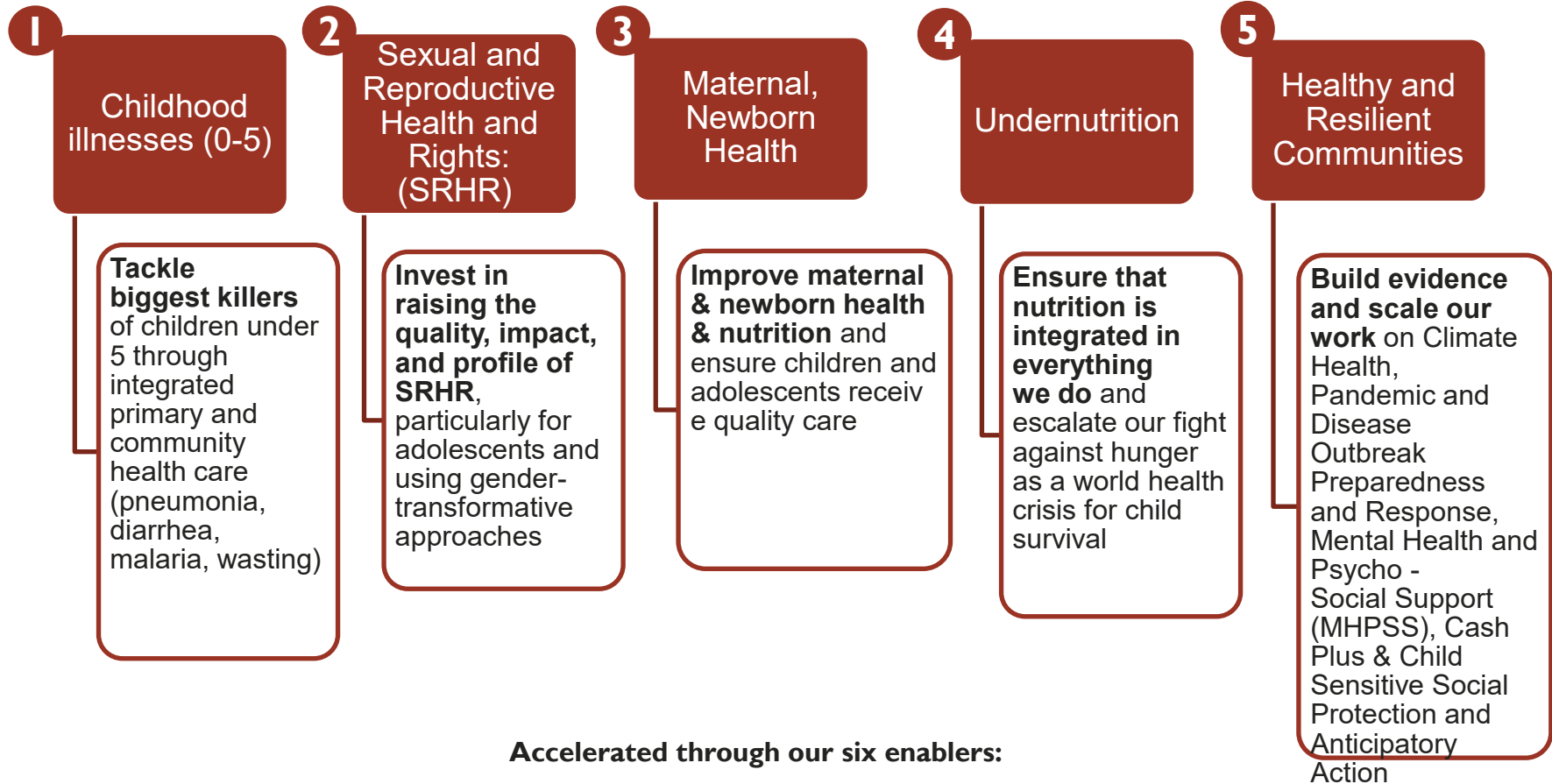
EMERGENCIES
RESPONDED TO



Save the Children



Healthy Start in Life | Top priorities to amplify impact in 2023/24



Accelerated through our six enablers:



SCI Medical Procurement Policy

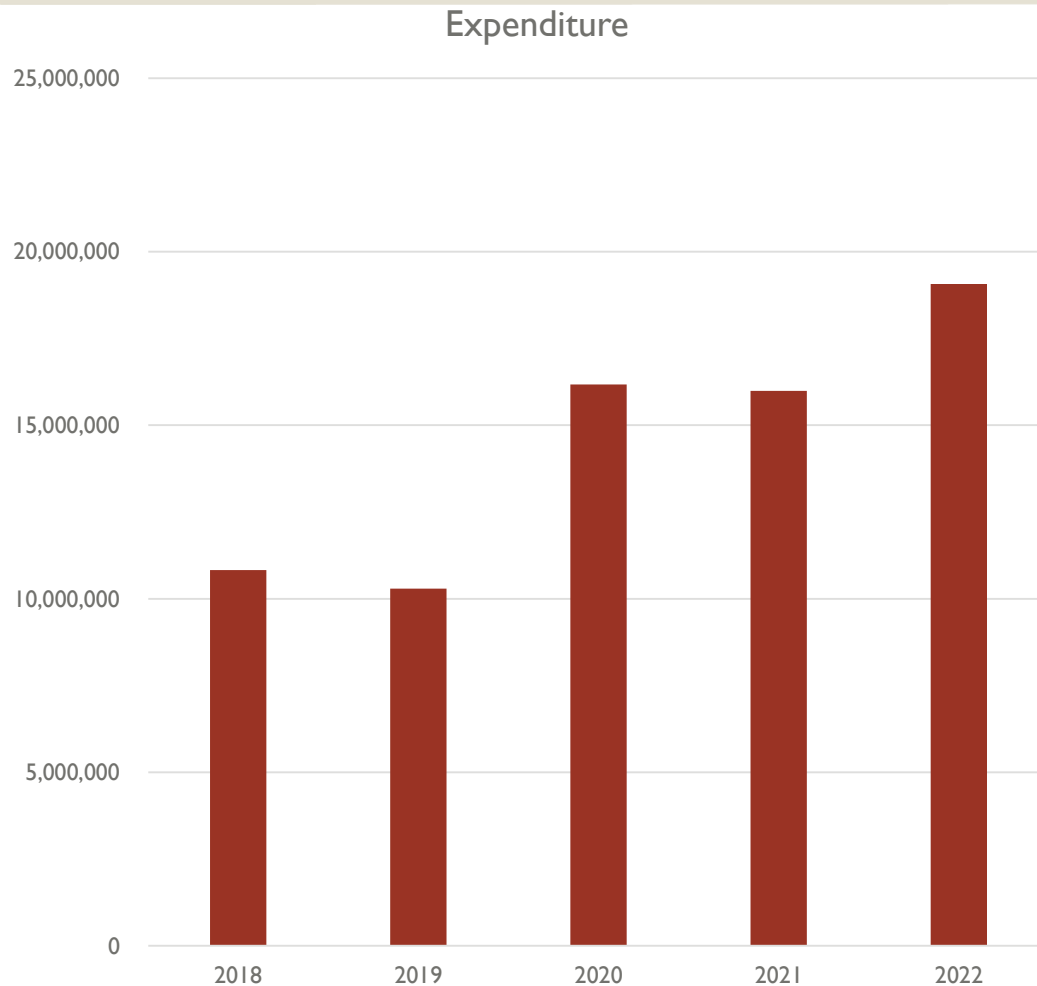
SCI Procures a broad range of basic pharmaceuticals and healthcare care commodities in accordance with WHO and National Essential Medicines List

SCI Procurement policy's main principle is that, by default, SCI procures internationally through its Prequalified Wholesale Medical Suppliers providing generic and affordable pharmaceuticals and other healthcare commodities.

- USAID Pre-qualified suppliers
- ECHO Humanitarian Procurement Centres
- WDA / GDP Licensed
- SCI GDP Audited / Qualified

In some countries, however, SCI is not authorised to import medical products. In that case, SCI applies a specific local procurement validation procedure.

Medical Procurement in USD



Type of Commodities

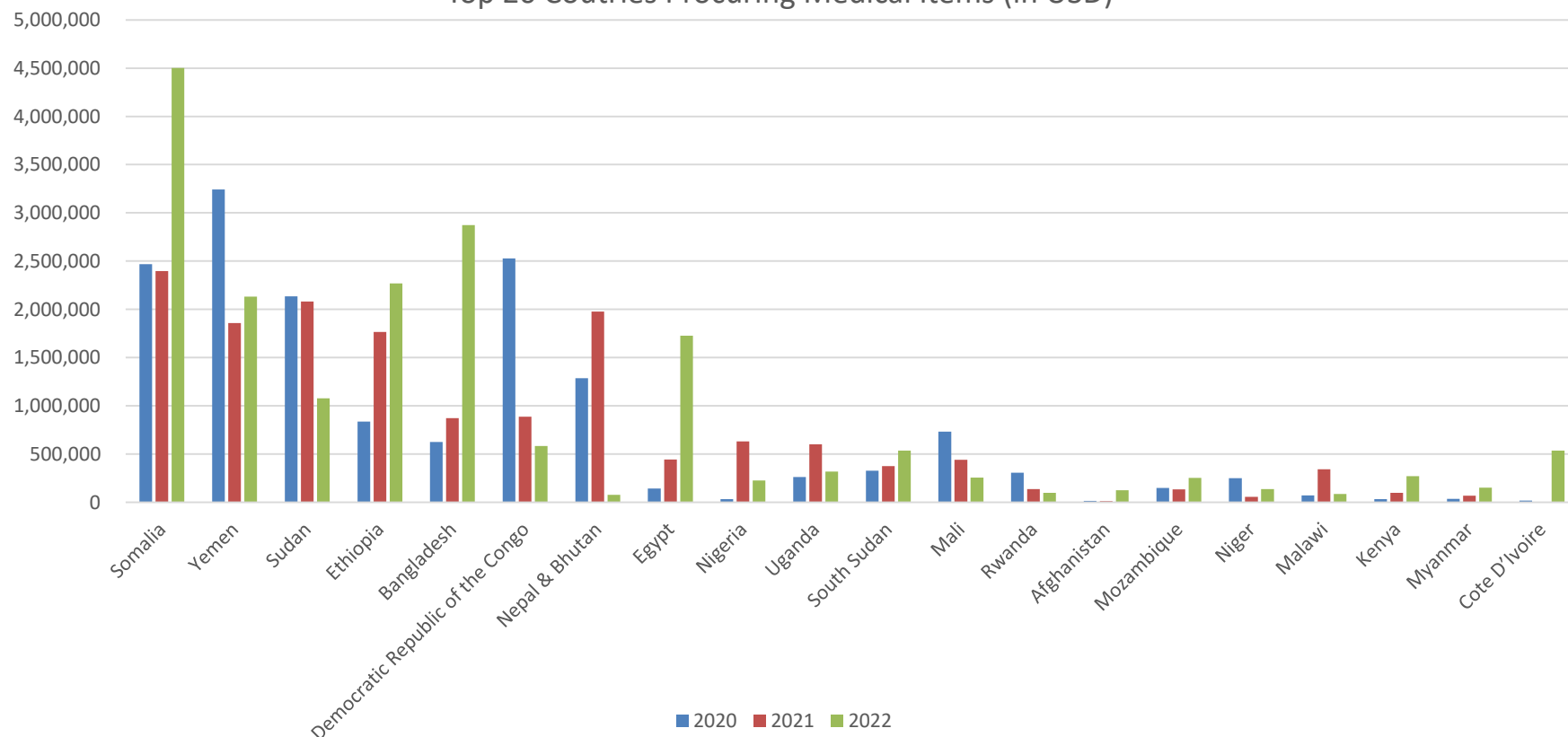
- **Pharmaceuticals**
- **Medical Consumables**
- **Medical Devices & Equipment**
- **Emergency Health Kits**
- **Specialized Nutrition Food**



Overview SCI Medical Procurement Activities

The Top 20 Countries procure \$18.2M Medical Products in 2022, which is approx. 96% of the total medical spend

Top 20 Countries Procuring Medical Items (in USD)



International vs Local Suppliers

Global SCI Suppliers

Pro's	Con's
Good Quality	Relative long lead times
Wide range availability	High Transport cost
Competitive price of goods	Custom clearance/importation
Requires relatively small number of Suppliers (wholesale dealers)	

Local Suppliers

Pro's	Con's
Shorter lead times	Less quality assurance
Strengthen local market	Availability of goods not assured
No international transport cost	Required high(er) number of suppliers
	Price of goods not cheaper



Temperature Control Management

- All International Medical Shipments are shipped in temperature-controlled environment
- All international medical cargo contain Temperature Data Loggers (both cold chain and ambient)
- Route Risk Assessment are done for each shipping lane
- Temperature excursion are reported on Datix System
- Major temperature excursion are investigated by Quality Manager while goods are put in quarantine.
- Root cause analysis are shared and discussed with stakeholders
- Medical Warehouses (in remote settings) WHO GDP/GSP compliant



Main Root causes of Temperature Excursions

- Inappropriate storage during delays on runway during (off)loading
- Inappropriate storage/delays at customs clearance
- Inappropriate transportation used in country
- Inappropriate storage facilities at airport



Good Distribution Practice (GDP)

Good Distribution Practice means that the quality and integrity of our medicinal products is maintained throughout our distribution chain. GDP ensures that:

We take the best measures to ensure substandard medicines do not reach our beneficiaries



Medicines are always handled, stored and transported under suitable and regulated conditions



Medicinal products are distributed properly, preventing potential threats to a patient's health



Medicines we distribute are from registered and compliant organisations only



We have full traceability so we can track our medicines through the supply chain, making returns and recalls easier



Challenges

- **Forecasting & Supply Chain Planning – data collection**
- **Reducing Lead times**
- **Quality Assurance local market commodities**
- **Managing Temperature Control in Remote settings**
- **Importation of Pharmaceuticals in challenging countries (Yemen, Sudan, etc.)**



Supply Chain Specialized Nutrition Food to Somalia

Video

THANK YOU



Save the Children